



Hynautic SS-04 TRANSMISSION SLAVE ASSEMBLY

† INCLUDED IN SHIFT SLAVE REPAIR
KIT# 68352K:

1 x	Lever Arm	610024
1 x	Screw	790323
1 x	Cam Detent	730014
1 x	Set Screw	240357
1 x	Spring	430296
1 x	Washer	740018
1 x	End Gland	630044
2 x	Bearing Race	190005
1 x	Bearing	190002
1 x	Pinion Assy	720150

*INCLUDED IN SEAL KIT ECS-06:

2 x	Dill Valve (Red)	160061
2 x	O-Ring	002222 (Not Used)
1 x	O-Ring	223729
1 x	O-Ring	345926
1 x	O-Ring	211027
2 x	O-Ring	211028
1 x	O-Ring	924022 (Not Used)
1 x	O-Ring	211125
1 x	Seal	224011
2 x	B/U Ring	252125
1 x	Wiper	642921

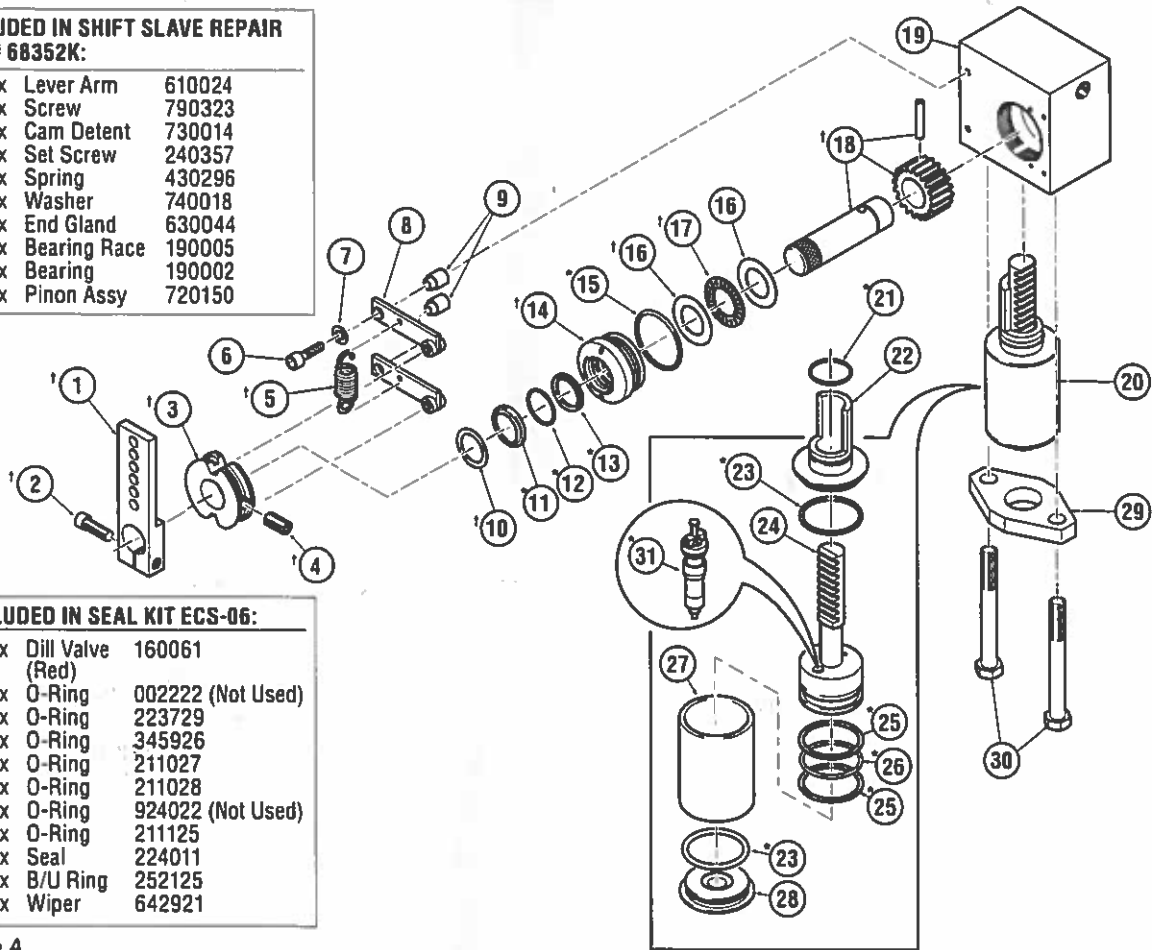


Figure A.

ITEM	PART #	QTY	DESCRIPTION
'1	610024	1	Lever Arm
'2	790323	1	Screw
'3	730014	1	Cam Detent
'4	240357	1	Set Screw
'5	430296	1	Spring
6	240337	2	Screw
7	703720	2	Washer
8	730020	2	Detent Assembly
9	630051	2	Bushing
'10	740018	1	Washer
'11	642921	1	Wiper
*12	223729	1	O-Ring
*13	224011	1	Quad Seal
'14	630044	1	End Gland
*15	211027	1	O-Ring
'16	190005	2	Bearing Race

ITEM	PART #	QTY	DESCRIPTION
'17	190002	1	Bearing
'18	720150	1	Pinion Assembly
19	900254	1	Body
20	500120	1	Slave Cylinder Assembly
*21	345926	1	O-Ring
22	560034	1	Cylinder End
*23	211028	2	O-Ring
24	600070	1	Slave Piston Assembly
*25	252125	2	B/U Ring
*26	211125	1	O-Ring
27	500131	1	Cylinder Tube
28	560064	1	Cylinder End
29	520014	1	Plate
30	240717	2	Bolt, HHCS, 3/8"NC x 3-1/4" SS
*31	160061	2	Dill Valves (Red)